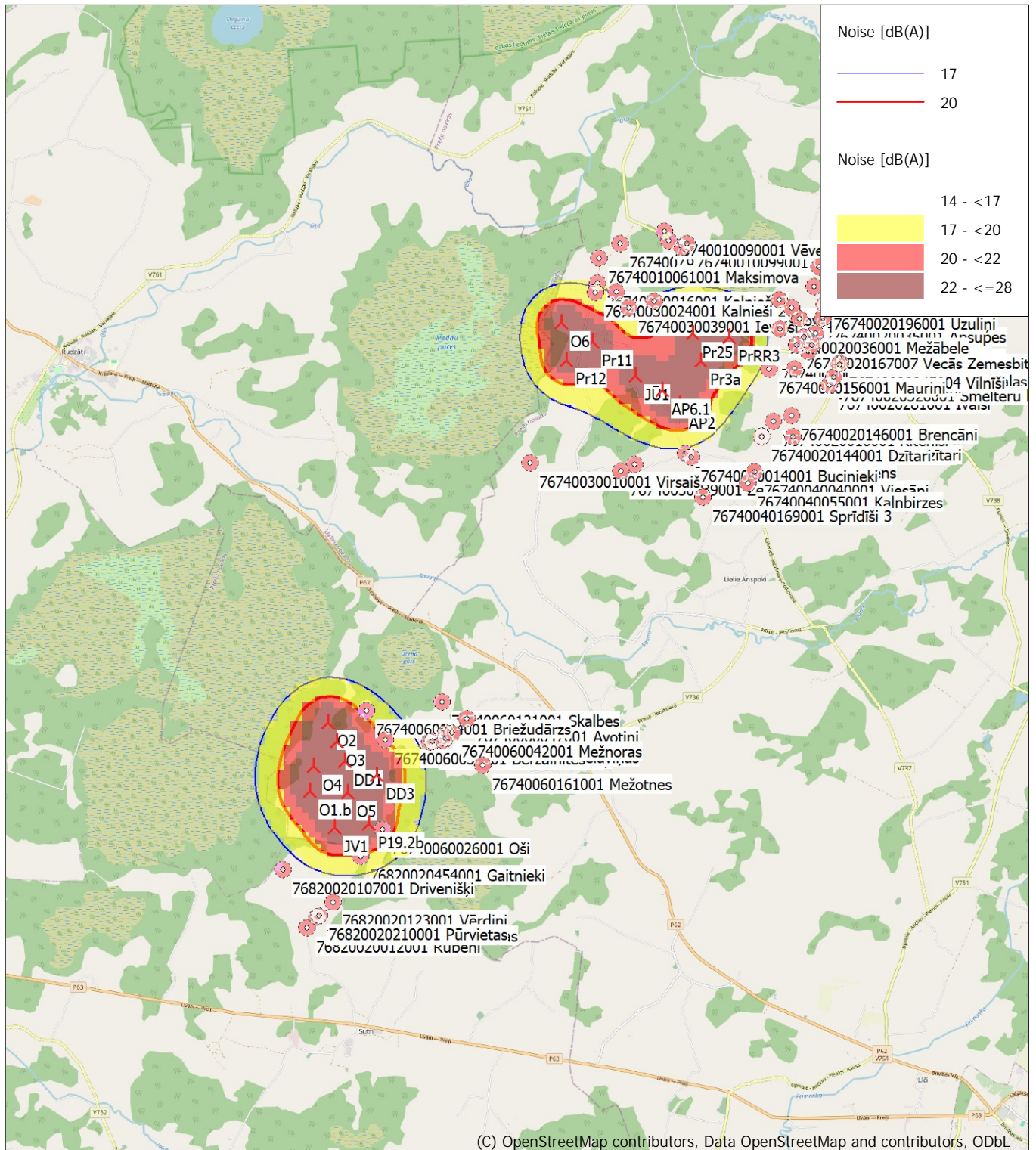


## DECIBEL - Map 6.0 m/s Regular dwellings

Calculation: Nordex N163-7.0 MW ST A alternative



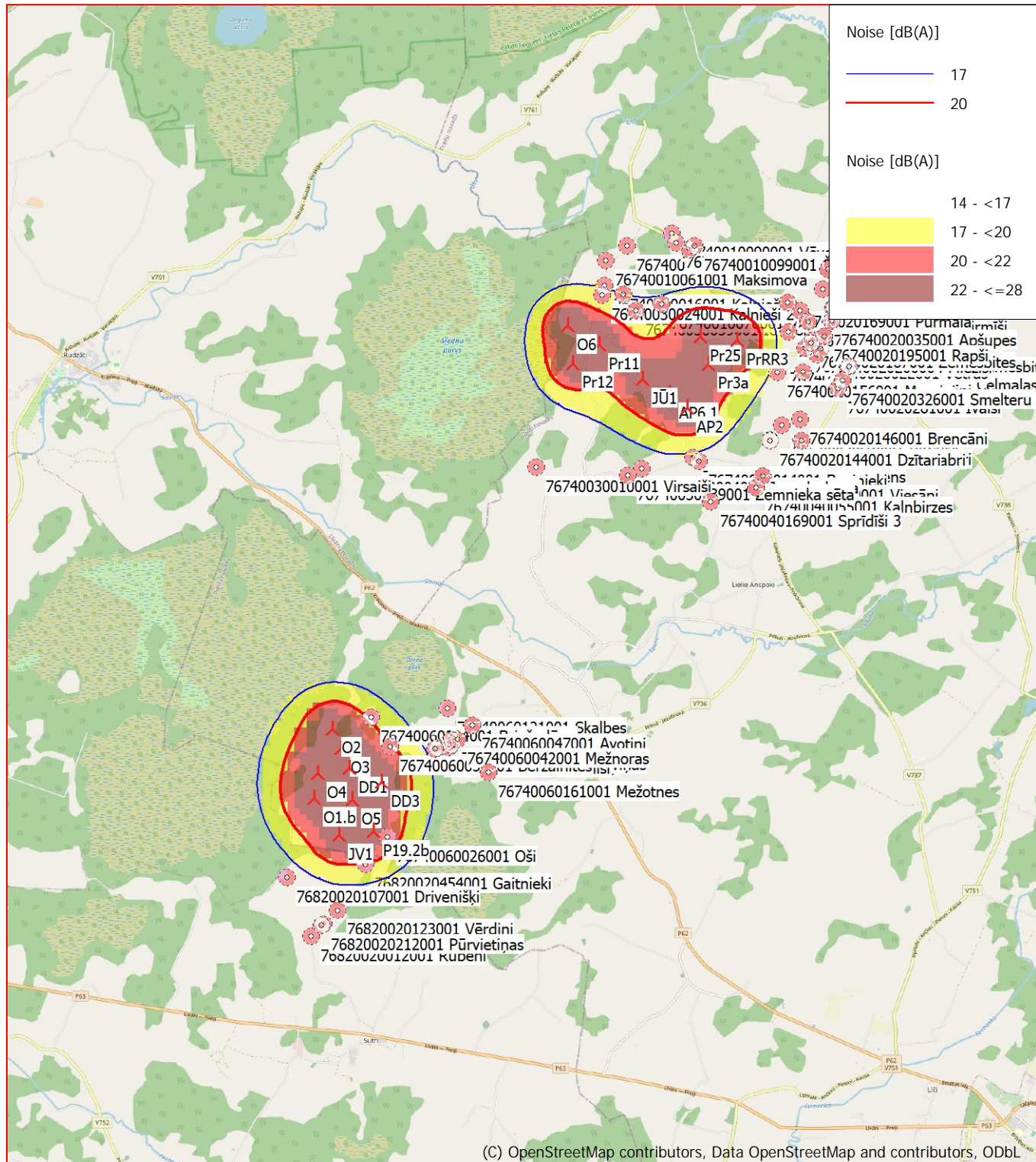
0 1 2 3 4 km

Map: EMD OpenStreetMap, Print scale 1:100,000, Map center Geo WGS84 East: 26.578066° E North: 56.383993° N  
 New WTG Noise sensitive area  
 Noise calculation model: Danish low frequency 2019. Wind speed: 6.0 m/s Regular dwellings  
 Height above sea level from active line object



## DECIBEL - Map 8.0 m/s Regular dwellings

Calculation: Nordex N163-7.0 MW ST A alternative



New WTG

Noise sensitive area

Noise calculation model: Danish low frequency 2019. Wind speed: 8.0 m/s Regular dwellings

Height above sea level from active line object